

Federal Accessibility

- Architectural Barriers Act (1968)
- Rehabilitation Act (1973)
- Americans With Disabilities Act (1990)





1 - to rear



2 - to yard



3 - to house

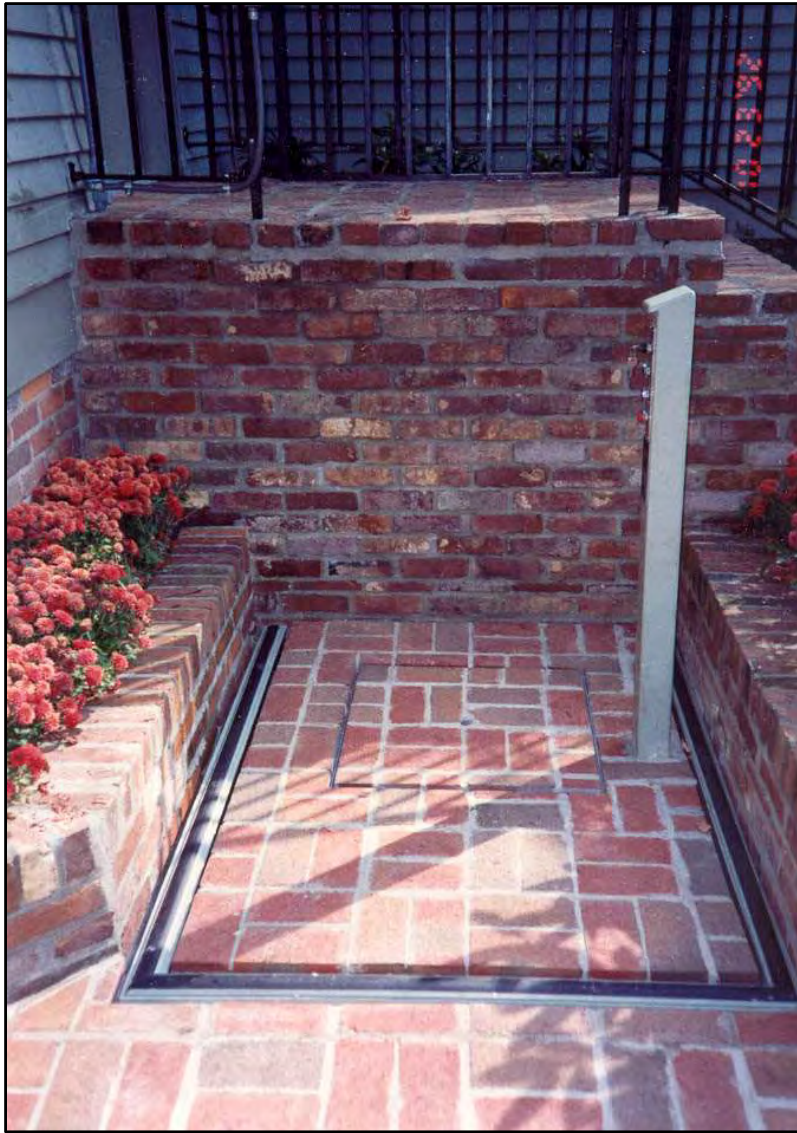


series of simple and sensitive ramps and lifts



Inensitive ramp covers the majority of a primary façade of this historic building.





Retractable lift meets the Standards



Simple ramp at side elevation
meets the Standards
Church, Fort Monroe
Hampton, VA











Mayflower Hotel
Washington, DC

Sensitive insertion
of ramps at
interior stairs...



Previous photos were courtesy of the National Park Service





















THE FAIRMONT CRE

424 TFG





































Intermission

10 Minute Break

